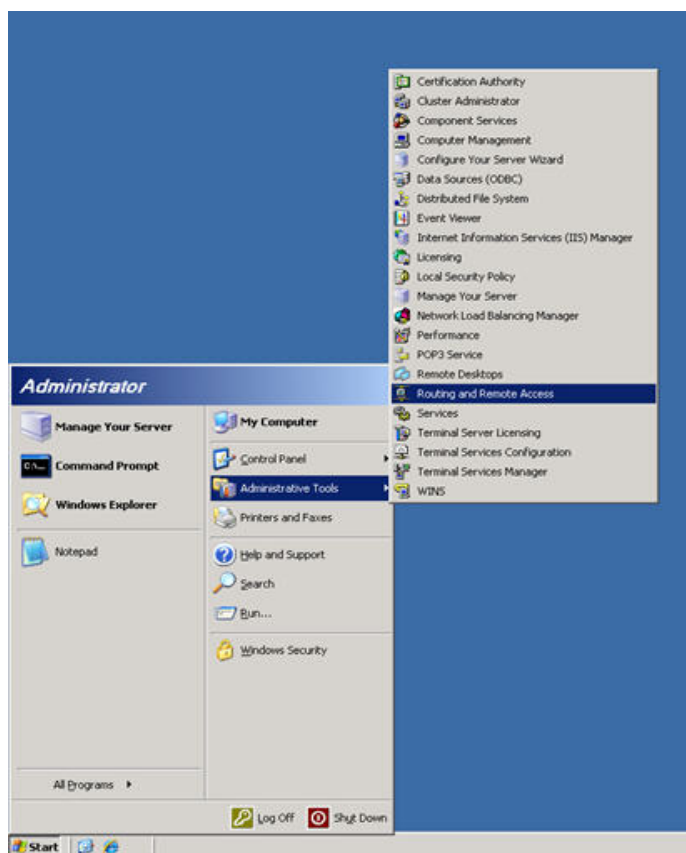


Enabling VPN on your VPS

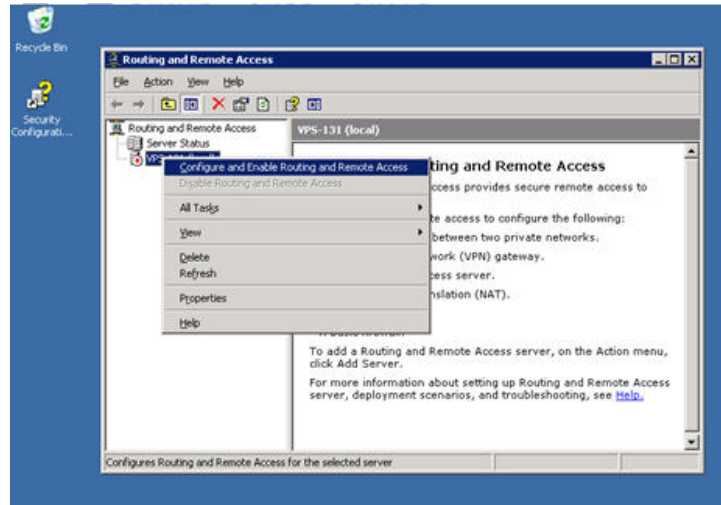
VPN Setup without Firewall

This guide documents how to setup basic VPN access to your VPS environment *without* a firewall. Many VPS administrators will want the added security provided by a firewall, in which case you should access and follow the direction provided in the [Enable VPN on your VPS with Firewall](#) guide.

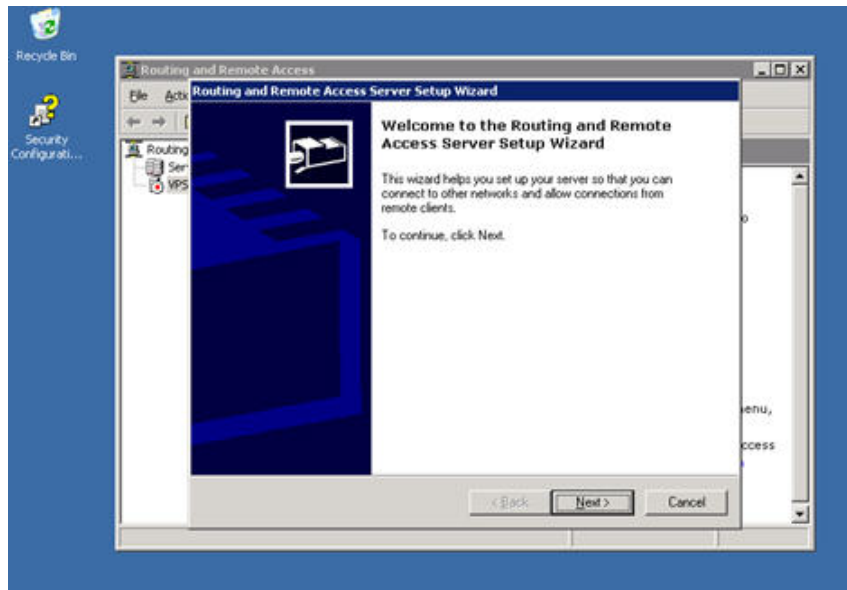
- 1) The first thing that you'll need to do is open a ticket with support asking that **Routing and Remote Access** be "enabled" on your VPS. We'll need your account number and VPS subscription number in order to do this.
- 2) Once this has been completed by MailStreet, Remote Desktop into you VPS node.
- 3) Once connected, select **Start |Administrative Tools | Routing and Remote Access**:



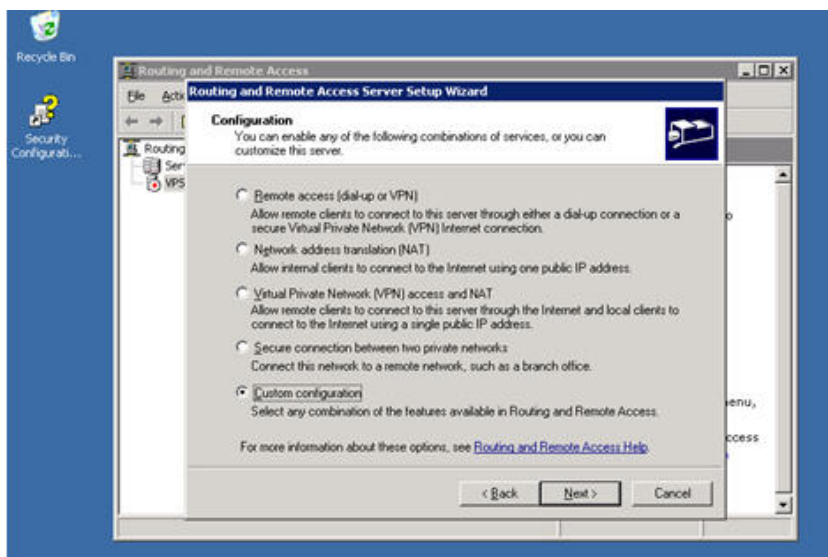
- 4) Right-Click on the displayed machine name and select **“Configure and Enable Routing and Remote Access”**:



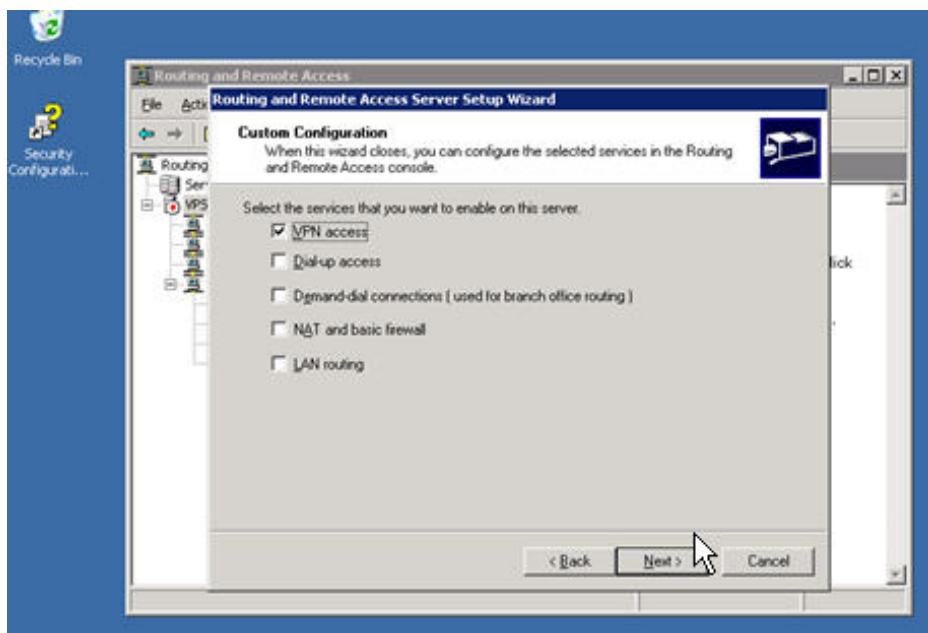
- 5) When the configuration wizard starts, click the **[Next]** button:



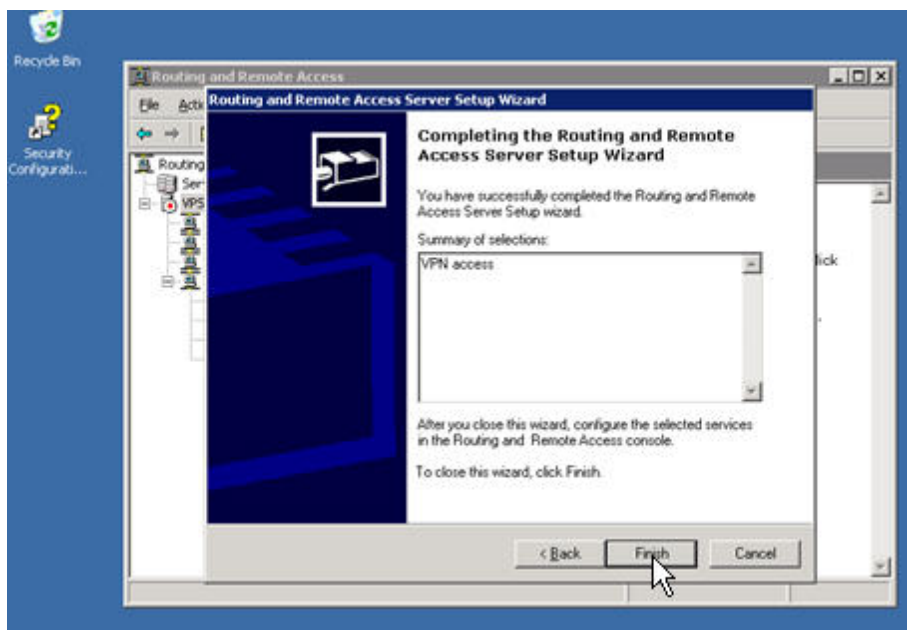
6) Select the **Custom Configuration** option, then click the **[Next]** button:



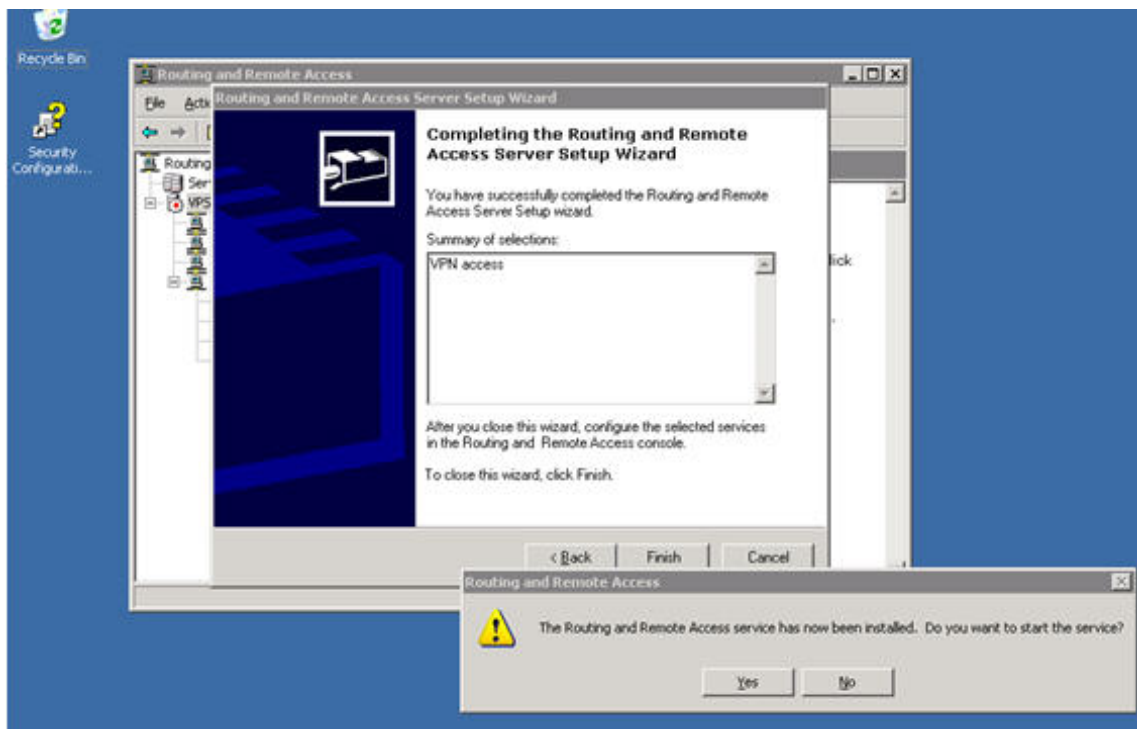
7) From the Routing and Remote Server Setup Wizard window click on the single option:: **VPN access** and then click the **[Next]** button:



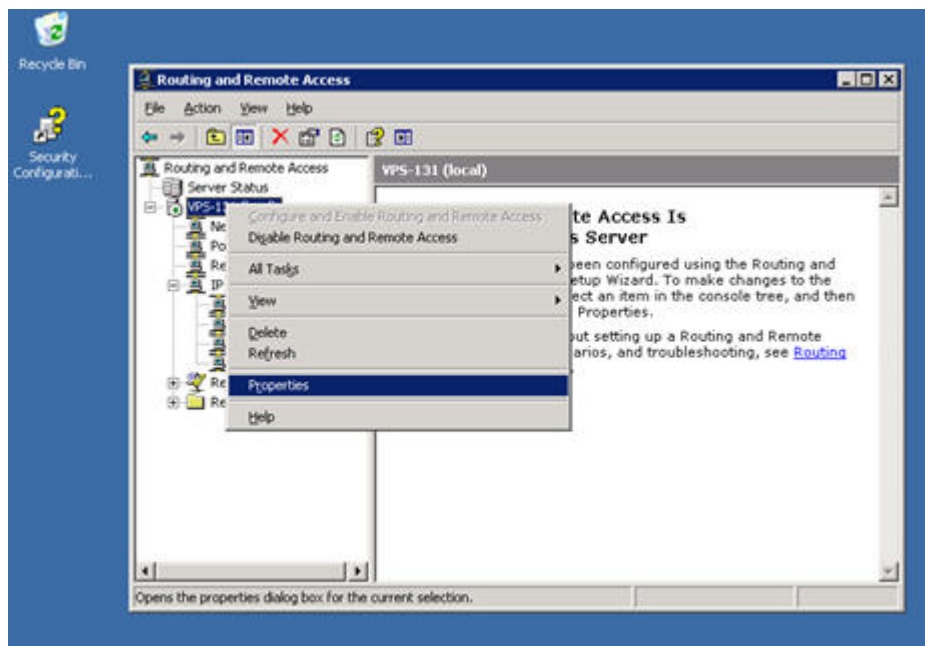
- 8) Verify that the **Summary of selections** indicates a single setup for **VPN Access** is selected and click the **[Finish]** button:



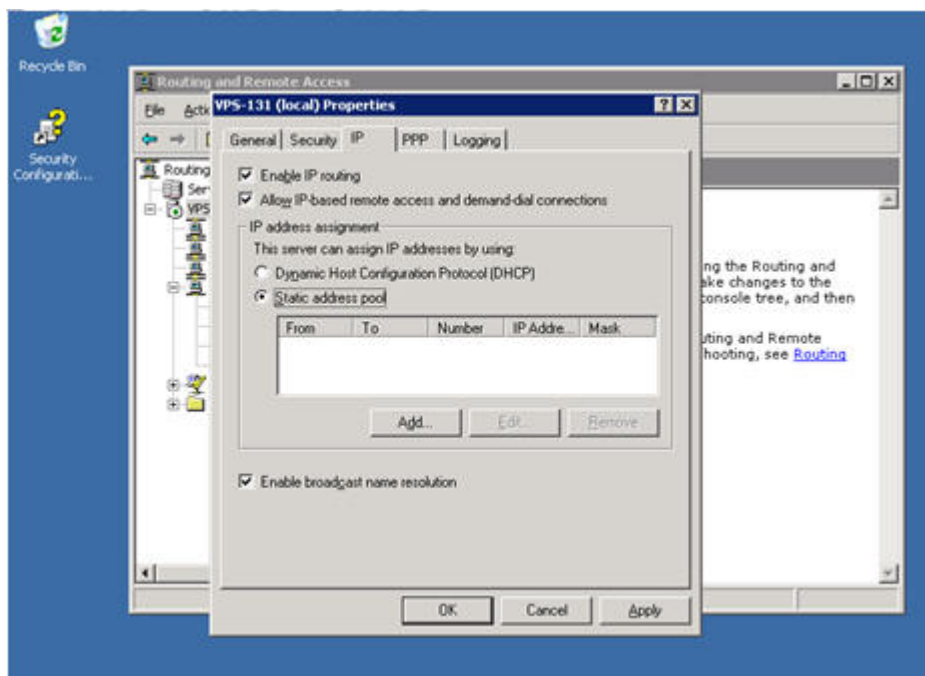
- 9) Click the **[Yes]** button to start the Routing and Remote Access Service (RRAS) and wait for the service to start:



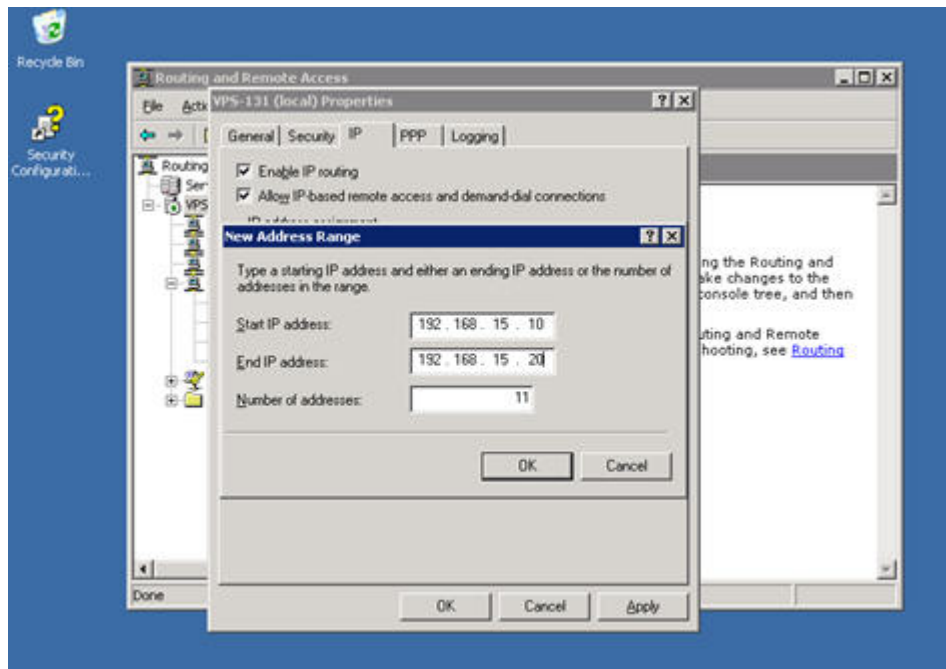
- 10) Once the RRAS service has started, you'll need to assign an IP pool for it to use. In the **Routing and Remote Access Window**, Right-click on the Machine Name and select **Properties** from the menu:



- 11) Choose the IP Tab and then select the Static address Pool option:



- 12) Hit the **[Add]** button, then enter a starting address (**192.168.15.10**), and an ending address (**192.168.15.20**) You can use this block or select your own – just make sure that the block you choose is
 - a. not the same as the network(s) that you will be connecting from, and
 - b. The block you assign uses private address space (**192.168.x.x / 172.16.32.x / 10.0.0.0**)



- 13) Select **[OK]**, then **[Apply]**. Routing and Remote Access / VPN is now enabled and running on your VPS.